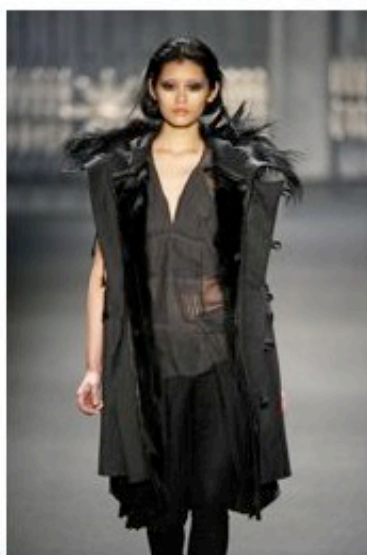
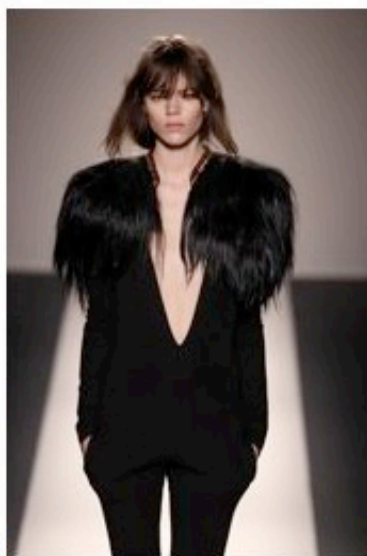


THE SEASON'S MUST-HAVES – Autumn/Winter 2011-12

by fashion consultant Christina McDaniel

As an editor, it can be hard to choose between the season's most dramatic fashion pieces and the key items that will add to a woman's wardrobe. With fur being a luxury product, it's important to see it as an investment and therefore having a certain amount of longevity. Fashion is fickle and there are some trends that are one-season-wonders while others will morph slowly into newer versions of themselves, leaving room for seasonal updating and reworking of a style that can add to its overall lifespan. This season, I feel it is important to think long-term as consumers are wanting more value in their choices and disposable fashion, especially in the luxury market, is becoming something of the past.

URBAN OUTFITTERS



1| The sheepskin jacket is given a modern edge at AMINKA WILMONT. 2| Shoulder emphasis is an important fashion statement and this long-haired capelet at BALMAIN can be used to accessorize both separates and tailoring or outerwear styles. 3| The fur gilet will continue to be a key silhouette and this easy style at BARBARA BUI is a fashion fix for many looks. 4| Lambskin is a continuing trend and the edge-to-edge coat has versatile appeal, seen here at DAMIR DOMA. 5| The parka is worked into a gilet silhouette at VERA WANG and has long-term urban appeal. 6| Banding fur with leather and chevron striping are both important fabrications going forward as are easy throw-on silhouettes as seen here at GARETH PUGH.

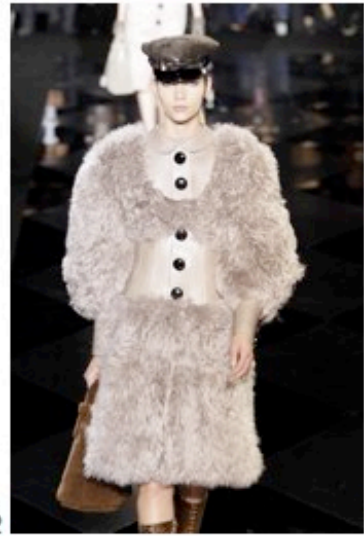
ICONIC CLASSICS



1



2



3



4



5



6

1| Shoulder emphasis along with a high-neck detail are both key looks for the season. Here, BURBERRY works these important design features into a perfectly tailored contemporary silhouette. 2| This beautifully rendered sleeveless jacket at ALEXANDER MCQUEEN is a must, with its high neck, exaggerated shoulder-line and neatly belted waist. 3| This LOUIS VUITTON style is one of *the* fashion pieces of the season and although it may not work for long, it *will* go down in fashion history making it a good investment piece. 4| The fur sleeve is huge fashion statement but takes on a classic feel when worked tonally at GUCCI. 5| This 30s inspired full fur coat at DONNA KARAN is glorious. It's a piece that would get a lot of wear and due to its vintage appeal, would become an instant classic. 6| This PRADA style is a must have and it's low slung belted waist looks new enough to last for a few seasons. The colour is to die for and a girl can never go wrong with a full fox shawl collar.